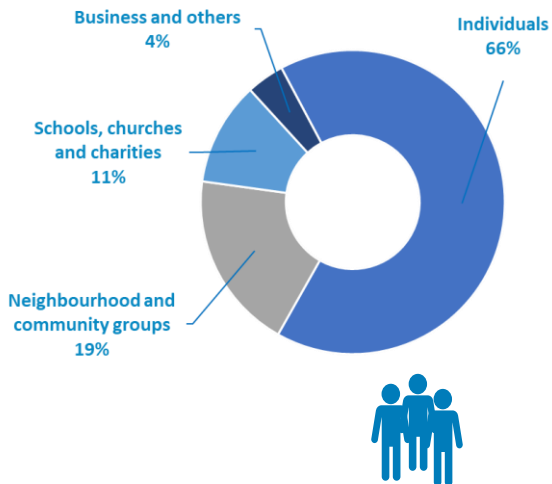


Community Policing Survey 2023

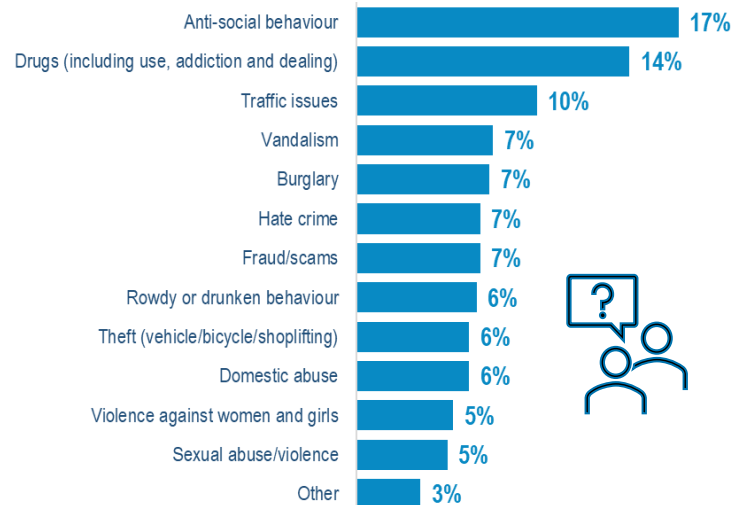
Outcome 3: We have engaged and supportive communities (assess and evaluate the impact of partnership working with local communities)

There were **269** responses to the survey

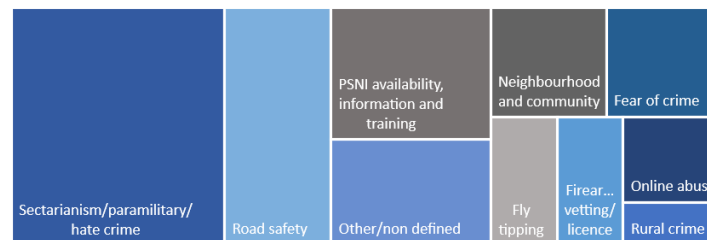


Two thirds of respondents answered on behalf of themselves (66%) and one fifth (19%) on behalf of a neighbourhood or community group

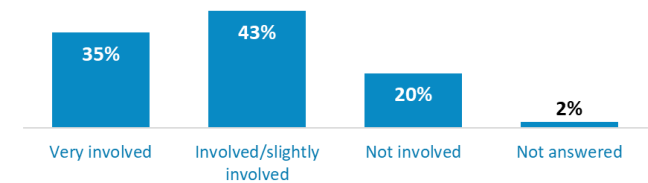
Key issues



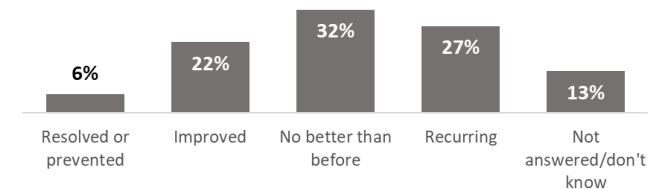
Other issues



Are you involved with PSNI in seeking solutions to local problems?



What is the status of the issue now?



Did you resolve these issues with a mutually satisfactory solution?

